

## McDonough County Board of Health

Dr. Amy Waschull, MD, MPH– President and  
Medical Director

Dr. Brianne Wehner, DO– Vice President

Carrie Pedigo-Treasurer

Marcia Moll-Secretary

Dr. Karen Blakeley, DVM, MPH

Dr. Tim Fitzgerald, DDS

Dr. Nancy Parsons, PhD., MPH

Sue Dunseth

Scott Schwerer /Marcia Twaddle – County Board

## Health Department Administration

Lynnette Cale, MS, CHES-Administrator

Kathy Cleer-Business Manager/ CFO

Chris Adams, BS, REHS- Environmental Health  
Director

Kerri Allen, BS, RN -Community Health Director

## Community Health

### Community Health Services include:

- Women, Infant, & Child (WIC) Program
- Child Screenings (Blood lead, hemoglobin)
- Childhood and Adult Immunizations
- Health Education
- Adult Health Screenings (Preventive screenings, STD testing, doctor ordered lab work)
- Illinois Breast and Cervical Cancer Program (IBCCP)
- Susan G. Komen Programs
- Communicable Disease education, surveillance, and investigation
- Volunteer and Internship Programs

## Community Health Program Statistics

Communicable Diseases (CD)	2017	2018
Bacterial Meningitis	0	0
Campylobacter	-	4
Chickenpox	0	3
Chlamydia	293	311
Diphtheria	0	0
E. Coli	4	5
Giardia	1	0
Gonorrhea	29	53
Hepatitis A	0	0
Hepatitis B	3	3
Hepatitis C	8	11
HIB	0	0
Histoplasmosis	1	1
HIV/AIDS	1	4
Influenza-ICU	6	6
Legionellosis	1	0
Lyme Disease	0	1
Malaria	0	0
Measles	0	0
MRSA	1	0
Mumps	3	42
Pertussis	0	0
Polio	0	0
Rabies (potential bat exposure)	2	0
Rubella	0	0
Rocky Mountain Spotted Fever	0	0
Salmonella	5	3
Shigella	0	0
Syphilis	3	7
Tetanus	0	0
Tuberculosis	1	0
Tularemia	0	0
West Nile	0	0 human cases 1 mosquito batch

CH Services	2017	2018
WIC-# of clients certified in clinic	642	564
Illinois Breast & Cervical Cancer Program and Susan G. Komen-# of clients	40 (13 Komen & 27 IBCCP)	12 (0 Komen & 12 IBCCP)
Childhood– blood lead screening	140	152
Lead Risk Inspection With EBL Child	2	1 Inspection 6 Follow-Ups
Childhood– Hemoglobin	530	441
<b>Immunizations</b>		
Childhood	551	546
Adult	166	205
Flu	704	818
<b>Adult Screenings</b>		
STD	51	31
HIV testing	46	30
OOPS screening	181	193
OOPS with Thyroid	150	179
Blood Pressure	98	97
Lipid Panel	3	5
PSA	53	49
Thyroid Panel	15	15
Hemoglobin A1C	72	97
CBC with Differential	10	14

## Environmental Health

### Environmental Health Services include:

- Food Safety and Food Sanitation, including food facility inspections and scoring, education, recalls, and complaint investigation
- Private Sewage Disposal
- Potable Water
- Insect, Vector, and Animal Control– including West Nile Virus and Nuisance Investigations
- Tanning and Tattoo Facility Inspections
- Radon Testing Kits and education
- Public Health Emergency Preparedness & Medical Reserve Corp (MRC)
- Unwanted Medication, Compact Fluorescent Light Bulbs (CFLs), Batteries, and Sharps Collection

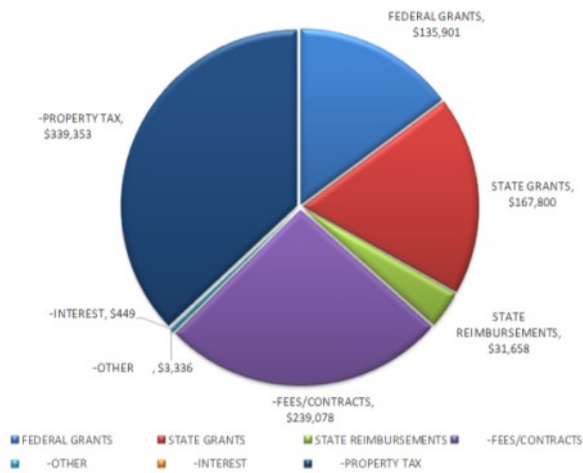
## Environmental Health Program Statistics

EH Services	2017	2018
<b>Food Sanitation</b>		
Retail Food Establishment	210	211
Annual Licenses Issued	210	210
Inspections	289	341
Re-Inspections	184	142
Pre-Operations Inspections	9	12
Temporary Permits Issued	67	71
Temporary Registrations	58	36
Closures	1	3
<b>Potable Water</b>		
Samples Analyzed	70	130
Abandoned Wells Sealed	4	3
Non-Community Public Water System (NCPWS) Inspections	7	3
Water Well Permits	6 private wells; 2 geo-thermal wells	7 private wells
Well Inspections/ Realty	13	11
Consultations	255	186
Comprehensive Well Inspections	1	3
Boil Order Notifications	31	31
<b>Private Sewage</b>		
Permits Issued	16	11
Sewage Checks/Realty	13	17
Subdivision Plat Review	3	0
Consultations	150	163
<b>West Nile Virus</b>		
# of Birds Submitted for Testing	2	2
# of Birds Testing Positive	0	0
Dead Bird Reports	6	4
<b>Nuisance Investigations</b>		
Food	36	40
Water	1	1
Sewage	2	0
Solid Waste	0	0
Insects/ Rodents	5	4
Housing	12	7
Other	4	5
<b>Other EH Programs</b>		
Tanning Facility Inspections	6	7
Tattoo Facility Inspections	4	2
Radon Test Kits Sold	132	52
Radon Test Results	96	29

## 2018 Revenues

SOURCES OF REVENUE	FY2017	FY2018
Federal Grants	\$139,010	\$135,901
State Grants	\$161,106	\$167,800
State Reimbursements	\$47,420	\$31,658
Local:		
Fees/Contracts	\$237,543	\$239,078
Other	\$5,633	\$3,336
Non-Operating Income		
Interest	\$403	\$449
Property Tax (Levy)	\$329,770	\$339,353
<b>Total Revenue</b>	<b>\$920,885</b>	<b>\$917,575</b>

FY 18 REVENUES



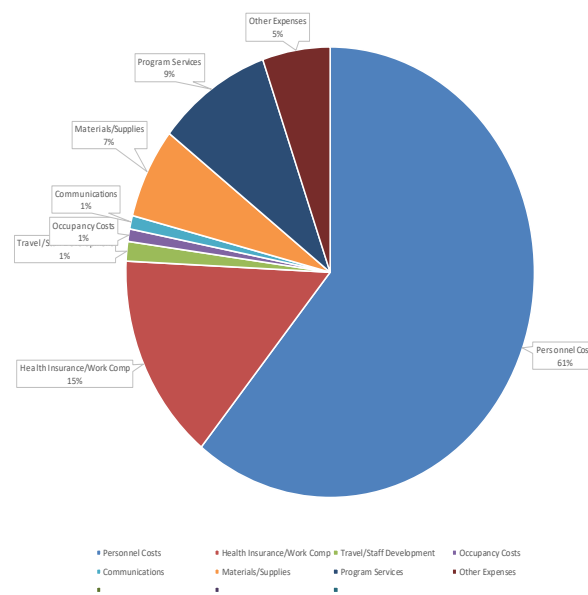
Cash Balance	FY2017	FY2018
Beginning of Year—December 1	\$823,780	\$861,277
End of Year—November 30	\$861,277	\$875,724

FY2018 Staffing Full Time— 13 Part Time— 1  
1-Part Time WIU AmeriCorps Fellow

## 2018 Expenses

EXPENSES	FY2017	FY2018
Personnel Costs	\$535,899	\$549,716
Health Insurance/ Work Comp	\$141,397	\$134,755
Travel/ Staff Development	\$14,329	\$12,648
Occupancy Costs	\$7,397	\$8,069
Communications	\$8,622	\$8,724
Materials/ Supplies	\$59,897	\$58,828
Program Services	\$81,385	\$82,079
Other Expenses	\$34,461	\$48,309
<b>Total Expenditures</b>	<b>\$883,387</b>	<b>\$903,128</b>

FY 2018



Note: McDonough County Health Department's Fiscal Year is December 1 to November 30.  
A more detailed description of the annual revenue and expenses is provided in the McDonough County Health Department Annual Budget.

## McDonough County Health Department IPLAN

The Illinois Project for Local Assessment of Needs (IPLAN) is a community health assessment and planning process that is conducted every five years by local health jurisdictions in Illinois. Based on the Assessment Protocol for Excellence in Public Health (APEX PH) model, IPLAN is grounded in the core functions of public health and addresses public health practice standards. The completion of IPLAN fulfills most of the requirements for Local Health Department certification under Illinois Administrative Code Section 600.400: Certified Local Health Department Code Public Health Practice Standards. The essential elements of IPLAN are:

1. An organizational capacity assessment
2. A community health needs assessment
3. And a community health plan, focusing on a minimum of three priority health problems.

According to McDonough County's 2015-2020 IPLAN our priority areas include:

1. Obesity
2. Sexual Health
3. Access to Dental Health
4. Access to Mental Health

## The 10 Essential Services of Public Health

1. Monitor health status
2. Diagnosis and Investigate
3. Inform, educate, and empower
4. Mobilize community partnerships
5. Develop policies and plans
6. Enforce laws and regulations
7. Link people to needed services and assure care
8. Assure a competent workforce
9. Evaluate health services
10. Research

### Public Health

- **Prevents** epidemics and the spread of disease
- **Protects** against environmental hazards
- **Prevents** injuries

McDonough County Health Department was ranked 43rd in Illinois for Health Outcomes and 79th for Health Factors for 2018 by the Robert Wood Johnson Foundation County Health Rankings report. Visit [www.countyhealthrankings.org/Illinois](http://www.countyhealthrankings.org/Illinois) for a complete, detailed report or to compare to other Illinois counties.

## McDonough County Health Department



## 2018 Annual Report

McDonough County Health Department  
505 E. Jackson St.  
Macomb, IL 61455

**Phone:** (309) 837-9951  
**Fax:** (309) 837-1100  
**Email:** [mchd@mchdept.com](mailto:mchd@mchdept.com)  
**Website:** [www.mchdept.com](http://www.mchdept.com)  
**Facebook:** McDonough County Health Department  
**Hours:** Monday-Thursday 7:30 AM—5:00 PM

### Mission

*The McDonough County Health Department will provide essential public health services for a safe and healthy community through promotion, protection, and prevention.*

### Vision

*The McDonough County Health Department will grow healthy lives and cultivate healthy choices to yield a healthy community.*