

2015 McDonough County Board of Health

Karen Blakeley, DVM, MPH-President
 Cheryl Hoffman, RN, MSN– Vice President
 Amy Waschull, MD, MPH– Secretary
 Robert Anstine, RPH Treasurer
 Mary Kathleen Lockard, MD Medical Director
 Sue Dunseth
 Timothy Fitzgerald, DDS
 Marcia Moll
 Scott Schwerer

Health Department Administration

Lynnette Cale, MS, CHES-Administrator
 Kathy Cleer-Business Manager/ CFO
 Chris Adams, BS, REHS- Environmental Health
 Director
 Kerri Allen, BS, RN -Community Health Direc-
 tor

Community Health

Community Health Services include:

- Women, Infant, & Child (WIC) Program
- Child Screenings (Blood lead, hemoglobin)
- Childhood and Adult Immunizations
- Health Education
- Adult Health Screenings (Preventive screenings, STD testing, doctor ordered lab work)
- Illinois Breast and Cervical Cancer Program (IBCCP)
- Susan G. Komen Programs
- Communicable Disease education, surveillance, and investigation
- Affordable Care Act In-Person Counselor
- Volunteer and Internship Programs

Community Health Program Statistics

Communicable Diseases (CD)	2014	2015
Bacterial Meningitis	0	0
Chickenpox	1	1
Chlamydia	204	264
Diphtheria	0	0
E. Coli	1	2
Giardia	1	0
Gonorrhea	18	18
Hepatitis A	1	0
Hepatitis B	0	1
Hepatitis C	8	9
HIB	0	0
Histoplasmosis	1	1
HIV/AIDS	1	0
Influenza-ICU	1	2
Legionellosis	0	1
Lyme Disease	0	0
Malaria	1	1
Measles	2	2
MRSA	0	3
Mumps	2 (probable)	1 (probable)
Pertussis	2	1
Polio	0	0
Rabies (potential bat exposure)	8	1
Rubella	0	0
Rocky Mountain Spotted Fever	0	0
Salmonella	3	1
Shigella	0	0
Syphilis	1	0
Tetanus	0	0
Tuberculosis	0	0
Tularemia	0	0
West Nile	0	0

CH Services	2014	2015
WIC-# of clients certified in clinic	559	633
Illinois Breast & Cervical Cancer Program and Susan G. Komen-# of clients	75 (26 Komen & 49 IBCCP)	44 (19 Komen & 25 IBCCP)
Childhood– blood lead screening	156	155
Lead Risk Inspection With EBL Child	3	7
Childhood– Hemoglobin	497	514
Immunizations		
Childhood	243	299
Adult	170	159
Flu	942	902
Adult Screenings		
STD	51	46
HIV testing	45	49
OOPS screening	172	178
OOPS with Thyroid	149	165
Blood Pressure	46	84
Lipid Panel	17	5
PSA	45	56
Thyroid Panel	10	8
Hemoglobin A1C	66	66
CBC with Differential	18	12

Environmental Health

Environmental Health Services include:

- Food Safety and Food Sanitation, including food facility inspections and scoring, education, recalls, and complaint investigation
- Private Sewage Disposal
- Potable Water
- Insect, Vector, and Road Control– including West Nile Virus Control and Nuisance Investigations
- Tanning and Tattoo Facility Inspections
- Radon Testing Kits and education
- Public Health Emergency Preparedness & Medical Reserve Corp (MRC)
- Unwanted Medication, Compact Fluorescent Light

Environmental Health Program Statistics

EH Services	2014	2015
Food Sanitation		
Retail Food Establishment	206	199
Annual Licenses Issued	206	199
Inspections	277	263
Re-Inspections	150	175
Pre-Operations Inspections	20	4
Temporary Permits Issued	69	41
Temporary Registrations	36	37
Closures	4	2
Potable Water		
Samples Analyzed	112	91
Abandoned Wells Sealed	8	7
Non-Community Public Water System (NCPWS) Inspections	11	6
Water Well Permits	6	7
Well Inspections/ Realty	14	10
Consultations	294	225
Comprehensive Well Inspections	2	5
Boil Order Notifications	19	18
Private Sewage		
Permits Issued	18	29
Sewage Checks/Realty	17	27
Subdivision Plat Review	0	2
Consultations	351	209
West Nile Virus		
# of Birds Submitted for Testing	3	2
# of Birds Testing Positive	0	0
Dead Bird Reports	8	8
Nuisance Investigations		
Food	22	31
Water	0	2
Sewage	6	4
Solid Waste	0	2
Insects/ Rodents	4	3
Housing	10	16
Other	7	4
Other EH Programs		
Tanning Facility Inspections	6	8
Tattoo Facility Inspections	1	2
Radon Test Kits Sold	102	107
Radon Test Results	44	62

2015 Revenues

SOURCES OF REVENUE	2014	2015
Federal Grants	\$132,459	\$150,889
State Grants	\$91,139	\$160,838
State Reimbursements	\$32,520	\$33,436
Local:		
Fees/Contracts	\$225,228	\$251,528
Other	\$2,005	\$4,230
Non-Operating Income		
Interest	\$390	\$365
Property Tax (Levy)	\$315,761	\$322,999
Total Revenue	\$799,702	\$924,285

2015 Expenses

EXPENSES	FY2014	FY2015
Personnel Costs	\$489,657	\$515,116
Health Insurance/ Work Comp	\$129,664	\$135,929
Travel/ Staff Development	\$24,729	\$15,152
Occupancy Costs	\$8053	\$7,998
Communications	\$6179	\$9,342
Materials/ Supplies	\$56,764	\$47,702
Program Services	\$103,700	\$106,211
Other Expenses	\$15,985	\$26,943
Transfer to Misc. Cont.	0	\$0
Transfer to Capital Improvement	0	\$0
Roof Loan/Property Purchase	\$50,091 (509 E. Jackson St Purchase)	\$20,000
Total Expenditures	\$884,822	\$884,393

McDonough County Health Department IPLAN

The Illinois Project for Local Assessment of Needs (IPLAN) is a community health assessment and planning process that is conducted every five years by local health jurisdictions in Illinois. Based on the Assessment Protocol for Excellence in Public Health (APEX_PH) model, IPLAN is grounded in the core functions of public health and addresses public health practice standards. The completion of IPLAN fulfills most of the requirements for Local Health Department certification under Illinois Administrative Code Section 600.400: Certified Local Health Department Code Public Health Practice Standards. The essential elements of IPLAN are:

1. An organizational capacity assessment
2. A community health needs assessment
3. And a community health plan, focusing on a minimum of three priority health problems.

According to McDonough County's 2015-2020 IPLAN our priority areas include:

1. Obesity
2. Sexual Health
3. Access to Dental Health
4. Access to Mental Health

The 10 Essential Services of Public Health

1. Monitor health status
2. Diagnosis and Investigate
3. Inform, educate, and empower
4. Mobilize community partnerships
5. Develop policies and plans
6. Enforce laws and regulations
7. Link people to needed services and assure care
8. Assure a competent workforce
9. Evaluate health services
10. Research

McDonough County Health Department was ranked 57th in Illinois for Health Outcomes and 77th for Health Factors for 2016 by the Robert Wood Johnson Foundation County Health Rankings report. Visit www.countyhealthrankings.org/Illinois for a complete, detailed report or to compare to other Illinois counties.

McDonough County Health Department



2015 Annual Report

McDonough County Health Department
505 E. Jackson St.
Macomb, IL 61455

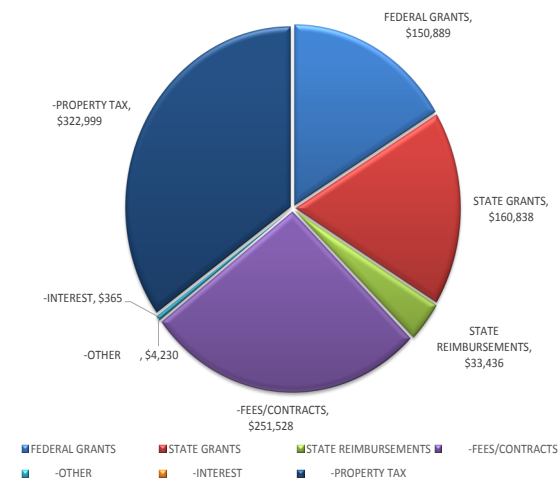
Phone: (309) 837-9951
Fax: (309) 837-1100
Email: mchd@mchdept.com
Website: www.mchdept.com
Facebook: McDonough County Health Department
Hours: Monday-Thursday 7:30 AM—5:00 PM



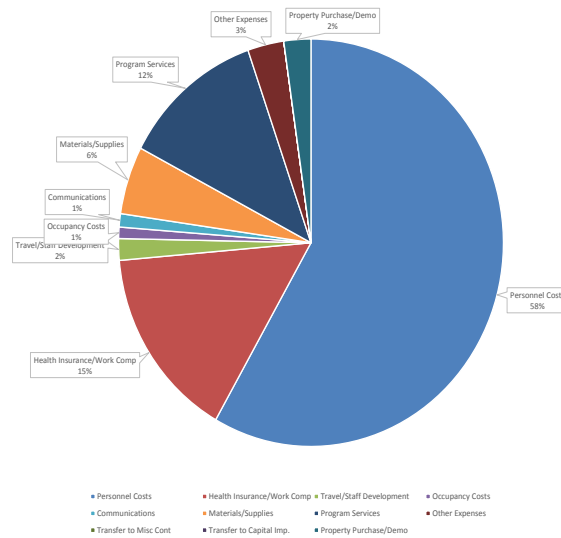
Public Health

- **Prevents** epidemics and the spread of disease
- **Protects** against environmental hazards
- **Prevents** injuries
- **Promotes** and encourages healthy behaviors
- **Responds** to disasters and assists communities in recovery
- **Assures** the quality and accessibility of health services

FY 15 REVENUES



FY 2015



Note: McDonough County Health Department's Fiscal Year is December 1 to November 30.

A more detailed description of the annual revenue and expenses is provided in the McDonough County Health Department Annual Budget.

Cash Balance	FY2014	FY2015
Beginning of Year—December 1	\$766,928	681,808
End of Year—November 30	\$681,808	\$721,700